

Jeffreys Walk, Clapham, SW4

3 bedroom flat - purpose built for sale

£435,000

Leasehold

Property Details

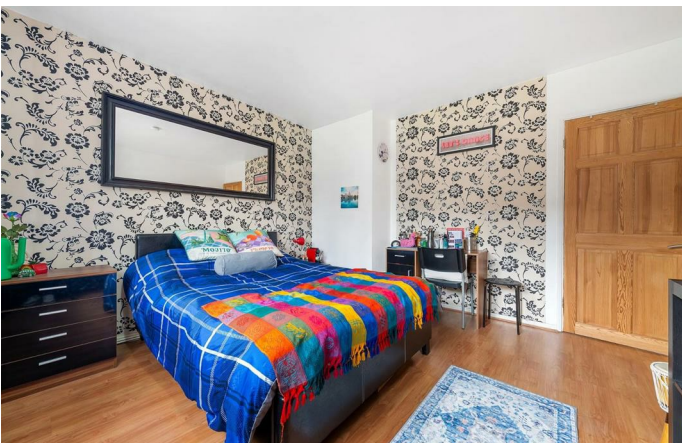
Spacious three bedroom apartment with a private South-facing balcony and access to beautifully maintained residents' gardens. Generous proportions unfold throughout, highlighted by an impressive reception room stretching over six metres in length. Large South-facing windows bathe the space in natural light, creating a bright and versatile setting with ample room to relax and entertain. A patio door opens onto the covered South-facing balcony, decked for ease of maintenance and suited to year-round enjoyment. The separate kitchen is well-appointed, wrapping around beneath a flurry of windows with leafy views, offering ample storage and workspace. Three bedrooms are thoughtfully positioned to the other side of the home. The principal is particularly spacious and airy, the second a comfortable double with fitted storage, and the third a flexible room ideal as another bedroom or home office. A generous family bathroom with bathtub and separate shower completes the home, while residents' gardens provide a green retreat in addition to your balcony.

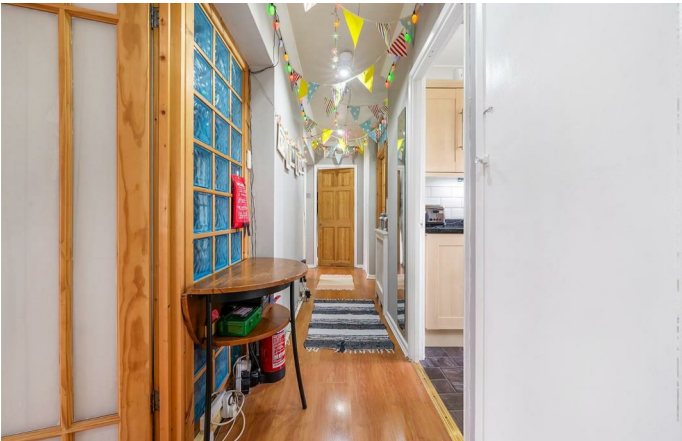
Features

- Three bedrooms
- Private South-facing balcony
- Residents' gardens
- Over 750 square feet with a bright ambience
- Victoria and Northern Lines a six-minute stroll away
- Clapham High Street a twelve-minute walk
- Brixton a fifteen-minute walk
- Battersea Power Station in walking distance
- Four Good and Outstanding schools within half a mile

Council tax band C

EPC rating B (82)

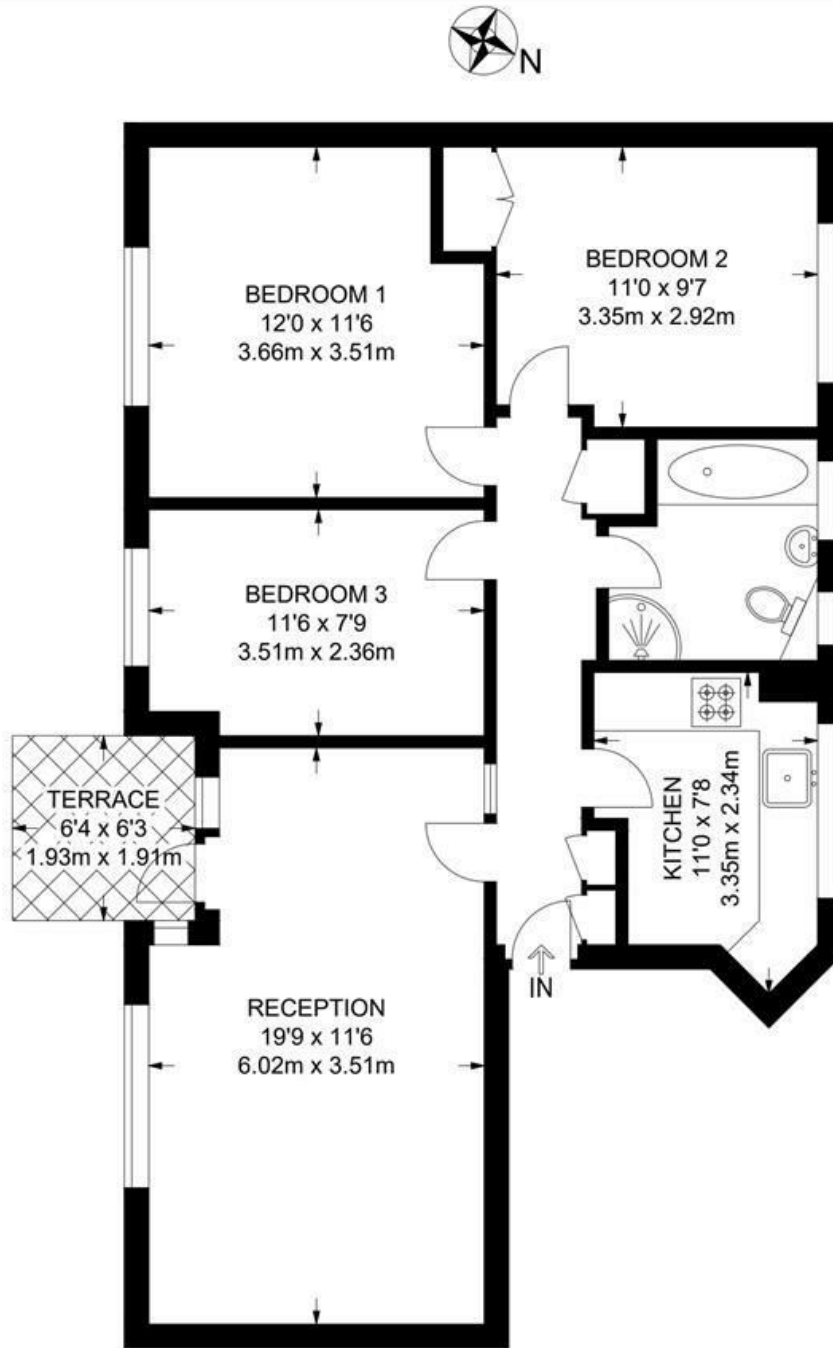




Jeffreys Walk, Clapham, SW4

Jeffreys Walk, SW4
3 Bedroom Flat

APPROXIMATE GROSS INTERNAL AREA: **760 SQ FT / 70.6 SQ M**



FIRST FLOOR



While we try our very best, floor plans are produced as a guide only and we take no responsibility for the precise accuracy with which any property is represented.

Jeffreys Walk, Clapham, SW4

